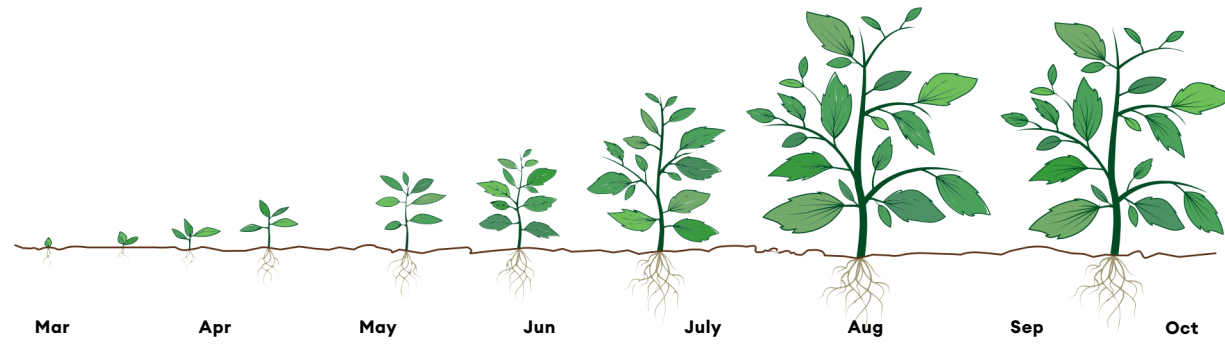
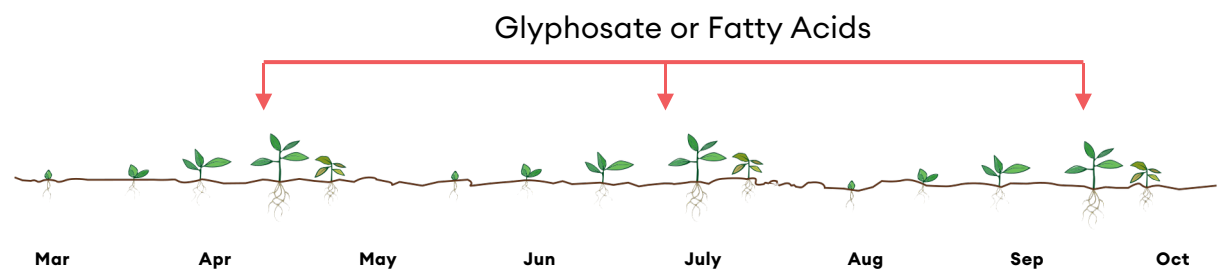


Example post emergent treatment programmes

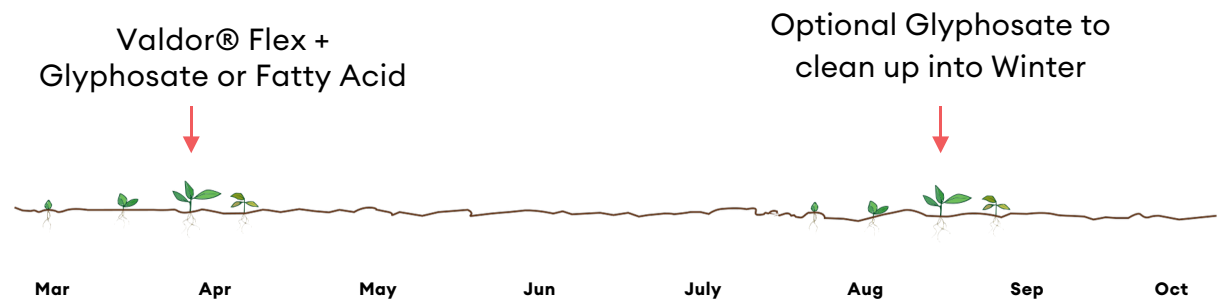
Untreated



Glyphosate Progression



VALDOR Flex Progression



Using **Valdor® Flex** as part of your weed management programme will provide cleaner surfaces for longer, while also reducing the amount of applications and active ingredient used when compared to a traditional weed management programme.

Valdor® Flex testimonial

Alan Abel, Complete Weed Control South and Central Wales

"Putting **Valdor® Flex** to the test on a heavily weeded gravel site at an international airport was a chance to find out if it would live up to expectations.

"Long-lasting residual control and ability to minimise resistance were two qualities we were looking for in the product, and we were very impressed by both aspects.

"Herbicide resistance is becoming a real issue in the amenity sector, so the fact the product brings new chemistry to our armoury is key. We also found it was particularly clean and easy to work with. There was no foaming in the tank, so the job was swiftly completed.

"In this trial we combined Valdor® Flex with glyphosate due to size of the weeds."



Valdor® Flex is a residual, pre-emergent, herbicide that controls a broad spectrum of weeds.

Advantages of Valdor® Flex

- + Ideal for use by local authorities, county councils, highways maintenance, vegetation management contractors, landscapers and many others
- + Due to long residual activity, Valdor® Flex requires less frequent applications. Reducing the amount of herbicide applied to achieve a weed free environment
- + Reduced risk of weed resistance by different modes of action

Key product benefits

- + A total, residual, pre-emergent herbicide
- + Combines new and trusted active ingredients Iodosulfuron and DFF
- + Can be used all year round (ground weather conditions permitting)
- + The 2 active ingredients have a complementary effect for greater weed control
- + Residual effect giving full season weed control
- + Great tool for resistance management
- + Convenient 500g (1ha) pack sizes
- + Can be mixed with glyphosate or fatty acids for post-emergent control



Envu
Milton Hall
Ely Road
Milton
Cambridge
CB24 6WZ

www.uk.envu.com

Scan to learn more →



All information contained herein was deemed correct at time of print. Published October 2014. © Envu

Valdor® Flex contains 360g/kg diflufenican and 10g/kg iodosulfuron-methyl-sodium (MAPPI9033) use plant protection products safely. Always read the label and product information before use. Pay attention to the risk indications and follow the safety precautions on the label. Valdor® Flex is a trademark of Envu.



Take the next step

towards season long, flexible weed control



Setting the bar higher through innovation

Green spaces, amenity areas and transport infrastructure play an important role within our society. Such areas are increasingly under pressure from budget constraints, weed infestations and fewer chemical solutions that control them. However we only benefit if the management of these areas are conducted in a professional and safe way.

Valdor® Flex is an innovative solution for the control of weeds in such areas.

Dual Active Formulation

NEW: Iodosulfuron is an innovative active ingredient for residual weed control and one of two effective substances in Valdor Flex.

Valdor® Flex is a residual, pre-emergent, herbicide that controls a broad spectrum of weeds. When applied prior to germination, depending on the weed species to be controlled, Valdor® Flex keeps the treated ground weed free for up to 4 months. The product is a combination of 2 active ingredients, Iodosulfuron-methyl-sodium and Diflufenican (DFF), in a convenient pack size. These active ingredients complement each other and improve the result compared to being applied individually.

Valdor® Flex can be applied to all permeable surfaces and railway ballast to provide effective weed control in a number of environments from industrial sites to public spaces. If weeds are present Valdor® Flex can be applied with glyphosate or a fatty acid to achieve control of existing vegetation.

How does Valdor® Flex work?

Valdor® Flex is a herbicide that controls a broad spectrum of weeds. When applied prior to germination, Valdor® Flex keeps the soil weed-free for up to 4 months by creating a dual barrier at the soil surface (see image to the right). The 2 active ingredients, Iodosulfuron and Diflufenican, complement each other and improve the result compared to applying the active ingredients individually.

Utilising the latest generation of water dispersible granule (WG) formulation, Valdor® Flex quickly dissolves in water and stays stable in the tank for a minimum of 24 hours.

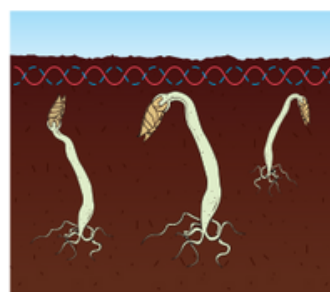
Valdor® Flex is a pre-emergent herbicide so should be mixed with glyphosate or a fatty acid if weeds are present.

Due to the unique combination of the 2 active ingredients, Valdor® Flex provides effective resistance management. It controls a wide spectrum of weed species and has a long lasting residual effect.

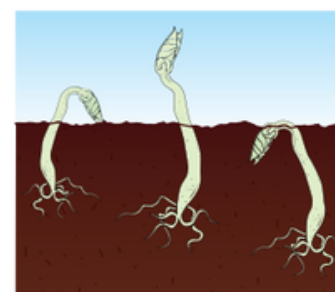
Key product benefits

- + New, innovative active ingredient in residual weed control
- + Combines new and trusted active ingredients Iodosulfuron and DFF
- + Can be used all year round (ground weather conditions permitting)
- + A total, residual, pre-emergent herbicide
- + The 2 active ingredients have a complementary effect for greater weed control
- + **Residual season long weed control**
- + Great tool for resistance management
- + Convenient 500g (1ha) pack size
- + Can be mixed with glyphosate or fatty acids for post-emergent control

Dual barrier to prevent weed emergence



Treated



Untreated

— Iodosulfuron-Methyl

--- Diflufenican



When to use Valdor® Flex

Valdor Flex is best applied before the emergence of weeds. **Valdor® Flex** can be applied all year round (ground weather conditions permitting), with a single application per year.

- + Apply before weed emergence
- + For post weed emergence, tank mix with glyphosate or fatty acid

Application period for Valdor® Flex

J F M A M J J A S O N D

- Valdor® Flex can be applied all year round

Formulation of Valdor® Flex

Valdor® Flex uses the latest generation of wettable granule (WG)

- + Very low dust formulation reducing operator exposure
- + Very stable as a suspension in the spray tank
- + The granules dissolve quickly and remain in suspension for a minimum of 24 hours
- + Product does not deposit on the bottom of the tank at time of mixing
- + Low odour
- + No stains on treated surfaces

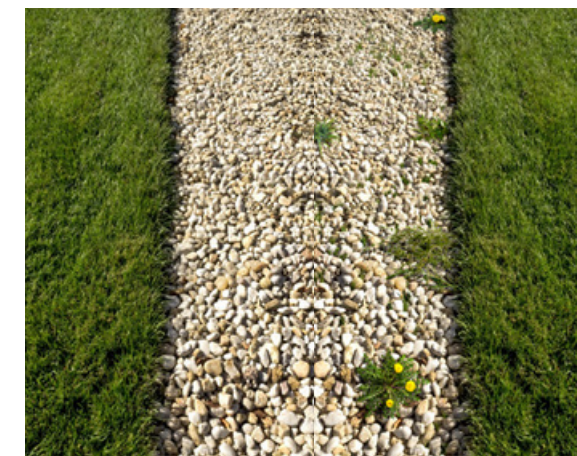
Available in:

- 500g bottles (1ha) for large areas and safe and easy tank filling

Dosage

Packaging	Dosage	Quantity of water	Surface
500g bottle	500g	300-500 litres	1ha

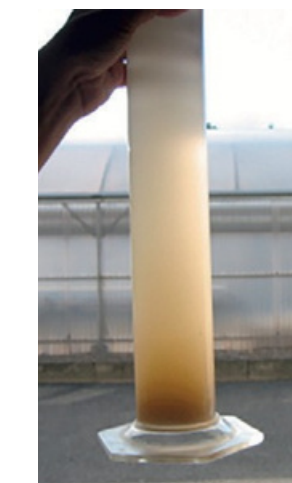
Knapsack example - 10g in 10l of water will cover 200m²



Apply Valdor® Flex

Apply Valdor® Flex and glyphosate or fatty acid

Leading competitor



Valdor® Flex



Valdor® Flex is readily soluble in water and remains stable in the tank.

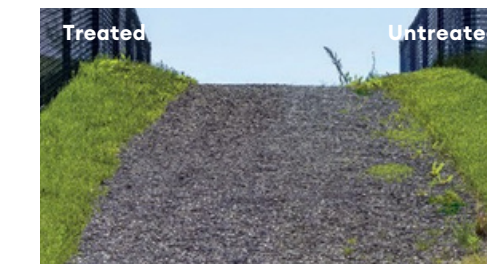


Product efficacy

Key weeds controlled by Valdor® Flex

- *Plantago lanceolata* (Ribwort Plantain)
- *Solanum nigrum* (Black Nightshade)
- *Veronica persica* (Persian Speedwell)
- *Sonchus asper* (Spiny Sowthistle)
- *Picris echioides* (Bristly Oxtongue)
- *Trifolium repens* (White Clover)
- *Epilobium parviflorum* (Hoary Willowherb)
- *Poa annua* (Annual Meadow Grass)
- *Daucus carota* (Wild Carrot)
- *Geranium dissectum* (Cut-Leaved Crane's-bill)
- *Taraxacum officinale* (Common Dandelion)
- *Medicago lupulina* (Black Medic)

Supported by internal trials



Preparing and applying Valdor® Flex

Preparation of spray solution

Check and calibrate the sprayer, before starting treatment. To prevent a surplus of spray fluid, carefully measure the surface to be treated and accurately calculate the required amount of spray fluid.

Proceed as follows:

- Fill half of the spray tank with water
- Add the required amount of Valdor® Flex to the spray tank
- Agitate before use
- Top-up water to required amount

Resistance management

When using products with the same mode of action plants can become resistant to the active ingredient being used. Once a plant becomes resistant to an active ingredient it cannot be controlled by that active ingredient or any other that has the same mode of action.

Resistance is not a problem, until it is a problem

Valdor® Flex is suitable for use on Non-crop areas (permeable surfaces overlying soil) such as: gravel paths and driveways, porous surfaces alongside roadways and fence lines, porous strips of land adjacent to buildings, industrial sites, timber yards, farm yards, oil and gas storage sites, power stations, electric sub-stations, beneath pylons, around street/park obstacles and furniture, porous areas near to trees and shrubs and other natural surfaces where vegetation is not desirable, and railway ballast.



Application and stewardship tips

- Do not apply Valdor® Flex in groundwater protection areas
- To minimise spray drift, the product must be applied using a nozzle capable of producing a coarse quality spray (e.g. Hypro Polijet AN0.6 or equivalent), or a track dedicated low drift application system.
- This product must not be applied to any non-porous surface
- Application permitted using:
 - Handheld sprayer
 - Vehicle mounted boom sprayer
 - Track dedicated low drift system for rail
- Only apply during suitable weather conditions